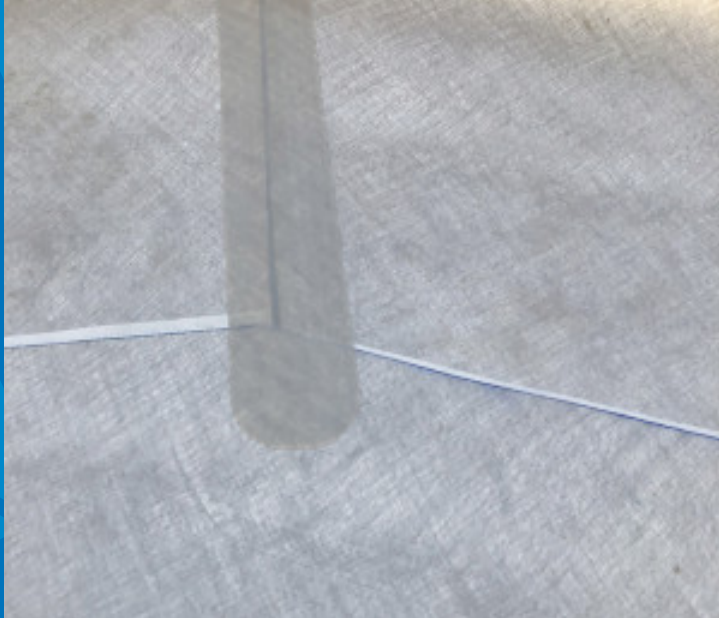


MAPEPROOF FBT TAPE 600

Adhesive tape to form joints between the upper-facing sides of adjacent membranes in the Mapeproof FBT system



WHERE TO USE

Waterproofing joints as part of the **Mapeproof FBT** waterproofing system for structures below ground level.

ADVANTAGES

- **Mapeproof FBT Tape 600** is cold-applied and does not require heat and/or naked flames.
- Easy to apply: **Mapeproof FBT Tape 600** is highly malleable.
- Excellent adhesion even at low temperatures

TECHNICAL CHARACTERISTICS

Mapeproof FBT Tape 600 is special adhesive tape dressed on its upper face with non-woven fabric. **Mapeproof FBT Tape 600** is one of the accessory items used in the **Mapeproof FBT** waterproofing system.

Mapeproof FBT Tape 600 is resistant to aggressive natural agents normally found in groundwater and in the ground. It is highly durable and is resistant to ageing caused by UV rays while normal site activities are being carried out.

APPLICATION PROCEDURE

Preparation of the substrate

Mapeproof FBT membranes on which **Mapeproof FBT Tape 600** is to be applied must be clean and dry. They must also be even and have no large protruding areas or hollows.

Application of the product

Unroll **Mapeproof FBT Tape 600** and, while removing the protective film, bond it over the **Mapeproof FBT** membrane. Go over the tape with a firm rubber roller so that it forms a sound bond with the membrane.

Before positioning steel reinforcement and pouring the concrete, make sure all the joints are well bonded. If any of the joints are poorly bonded, apply more **Mapeproof FBT Tape 600** to form a better bond.

RECOMMENDATIONS

- **Mapeproof FBT Tape 600** must not be applied if there is water or puddles.
- **Mapeproof FBT Tape 600** must be covered by concrete within 5 weeks of being applied.

PACKAGING

Mapeproof FBT Tape 600 is available in 0.15 m wide rolls x 20 metres long.

STORAGE

Mapeproof FBT Tape 600 may be stored for 12 months in its original packaging in a dry area at a temperature of +10°C to +35°C.

SAFETY INSTRUCTIONS FOR PREPARATION AND APPLICATION

Mapeproof FBT Tape 600 is an article that, according to current European Regulations (Reg. (EC) 1906/2007 - REACH), does not require a Safety Data Sheet. During use wear protective gloves and goggles and follow the guidelines for safety at the workplace.

PRODUCT FOR PROFESSIONAL USE.

TECHNICAL DATA (typical values)

PRODUCT IDENTITY

Appearance/material:	adhesive tape dressed on one side with white non-woven fabric
Width of roll:	0.15 m
Nominal thickness:	1.1 mm
Weight (kg/m ²):	≥ 0.9 kg/m ²

APPLICATION DATA

Application temperature:	0°C to +40°C
--------------------------	--------------

Although the technical details and recommendations contained in this product data sheet correspond to the best of our knowledge and experience, all the above information must, in every case, be taken as merely indicative and subject to confirmation after long-term practical application; for this reason, anyone who intends to use the product must ensure beforehand that it is suitable for the envisaged application. In every case, the user alone is fully responsible for any consequences deriving from the use of the product. Please refer to the current version of the Technical Data Sheet, available from our website www.mapei.com

LEGAL NOTICE

The contents of this Technical Data Sheet ("TDS") may be copied into another project-related document, but the resulting document shall not supplement or replace requirements per the TDS in force at the time of the MAPEI product installation. The most up-to-date TDS can be downloaded from our website www.mapei.com.
ANY ALTERATION TO THE WORDING OR REQUIREMENTS CONTAINED OR DERIVED FROM THIS TDS EXCLUDES THE RESPONSIBILITY OF MAPEI.

7697-1-2022 (EN)

Any reproduction of texts, photos and illustrations published here is prohibited and subject to prosecution

